



Irvine Unified School District  
Orange County, California

# Update on the Siting of the 5<sup>th</sup> Comprehensive High School

IUSD Board Meeting

March 18, 2014

# Topics for Discussion

## State Approval Update – High School Site A & Site B

- Environmental Studies
- California Department of Education Site Review
- State Funding

## Construction Update – HS Site A

- Grading Coordination
- Impact on Design Timeline

## Project & Construction Timeline and Phasing Options

- Site A
- Site B

## High School Enrollment Projection

# State Approval Update

## Environmental Studies

SITE A	COMPLETION
Phase I Environmental Site Assessment, DTSC Approved	December 2012
Geologic and Environmental Hazard Assessment Report	March 2013
Pipeline Safety Hazard Assessment (PSHA)	July 2013
Environmental Impact Report Board Certified	November 2013
Preliminary Environmental Assessment (PEA) Work Plan, DTSC Approved	December 2013
Preliminary Environmental Assessment Report Submitted to DTSC	January 2014
DTSC Determination (expected April 2014)	Pending

# State Approval Update

## Environmental Studies

<b>SITE B</b>	<b>Proposed Schedule</b>
Draft Preliminary Environmental Assessment (PEA) Work Plan	March 31, 2014
DTSC Comments Due on Draft PEA	April 2014
PEA Report Submittal to DTSC	July 2014
Geologic and Environmental Hazard Assessment Report	July 2014
Health Risk Assessment (Proximity to Freeways)	July 2014
Pipeline Safety Hazard Assessment (PSHA)	July 2014
EMF Exposure Hazard Assessment	July 2014
DTSC Determination	September 2014
Environmental Impact Report Certification	October 2014

# State Approval Update

## California Department of Education

### Site A

- Site Review Package Submitted November 2013
- DTSC Determination expected no later than April 4, 2014
- CDE will complete their review of entire site package, then issue Site Approval

### Site B

- Preliminary Environmental Assessment draft Work Plan Review Pending
  - Once DTSC reviews, staff will recommend further site investigations, including starting CEQA Studies and Traffic Analysis

# State Approval Update

## State Funding

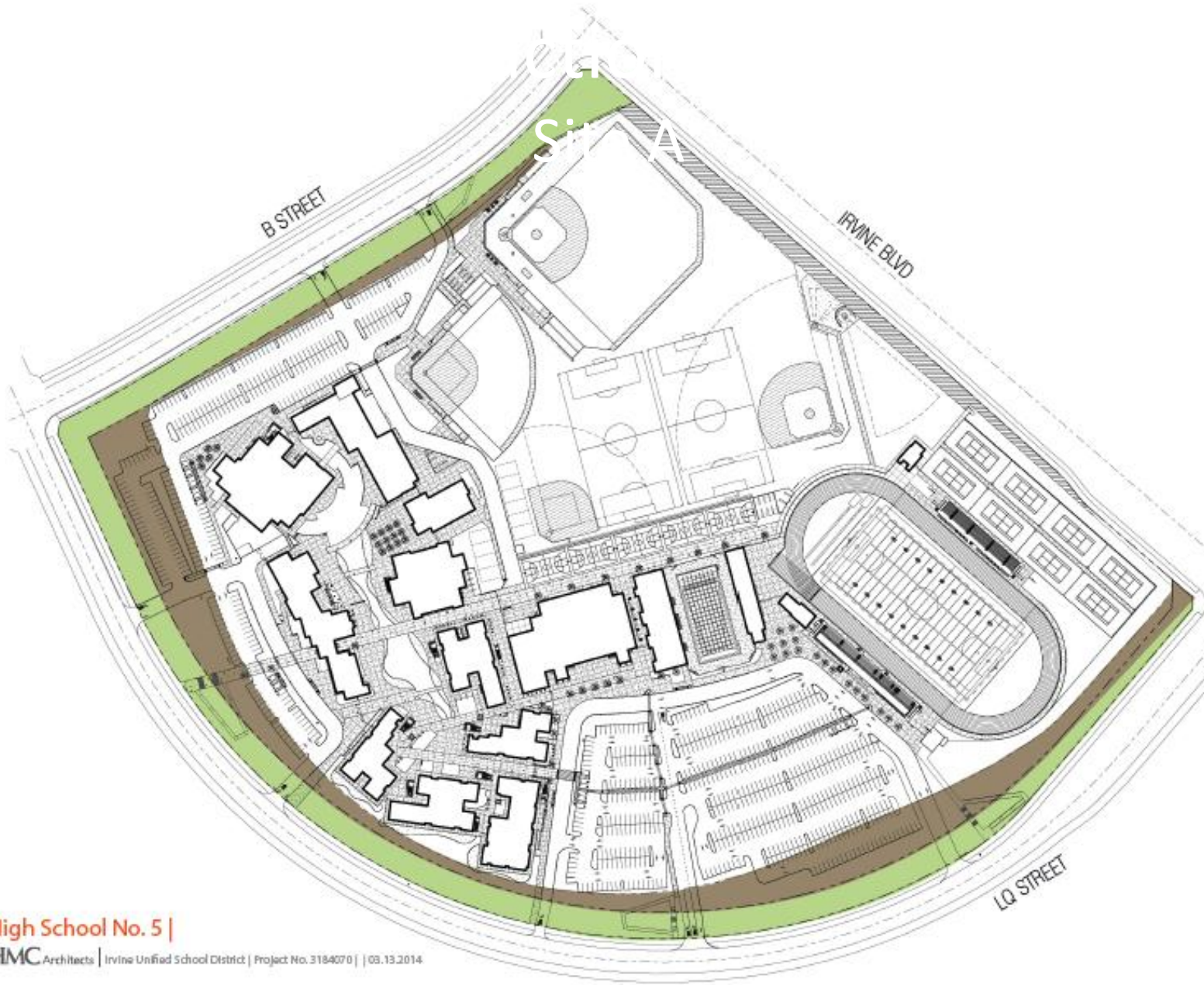
- Future State Funding remains uncertain
- Potential for a November 2014 Bond still remains
  - Important to submit funding application to get in line for future facilities bond
- Delay in funding application submittal
  - Potential risks in running out of funding authority

# Construction Update

## Site A

### **Grading Coordination & Impact to Design Timeline**

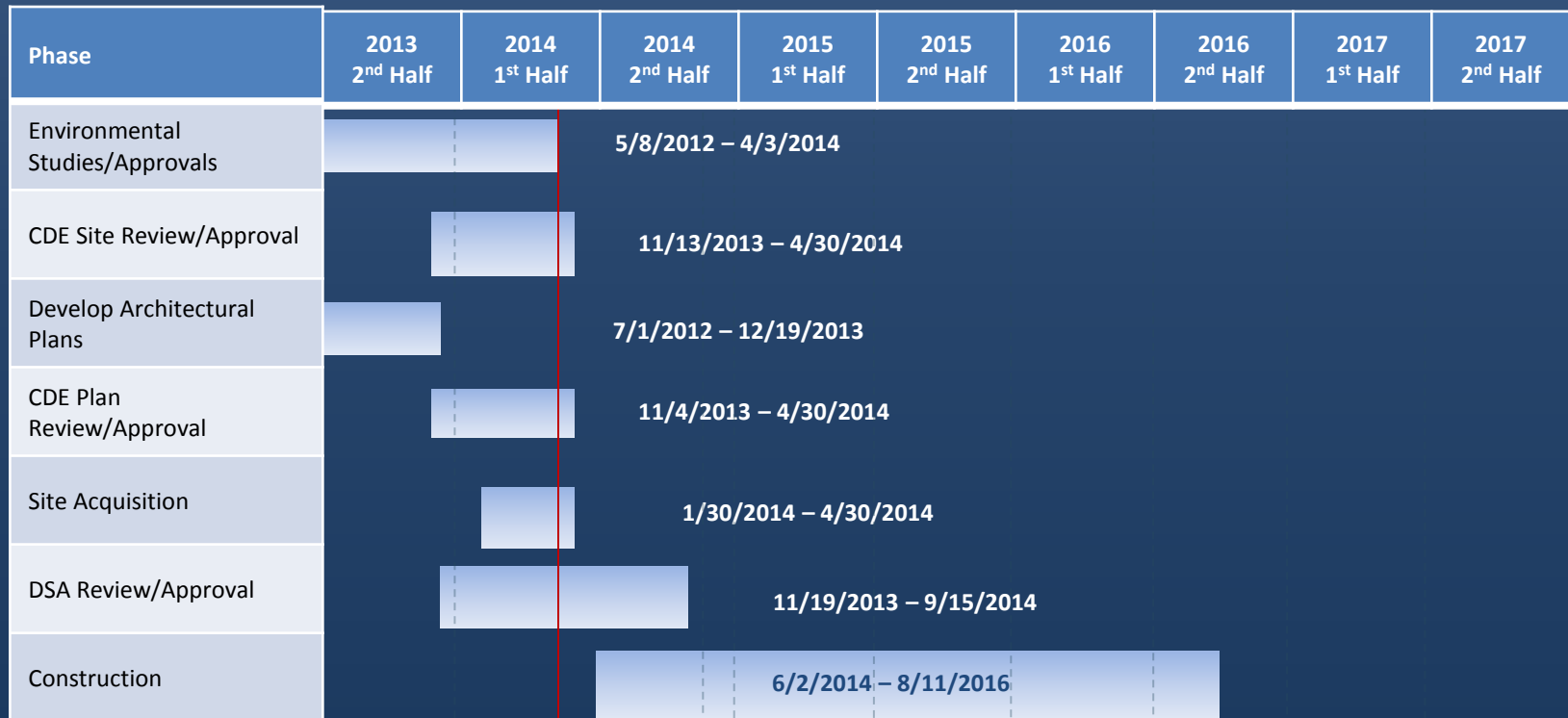
- Infrastructure Coordination
- Grading
- Property Line and Landscape Zone
- Design Impact – Buildings, Fields, Parking
- Plan Review Impact – DSA, CGS





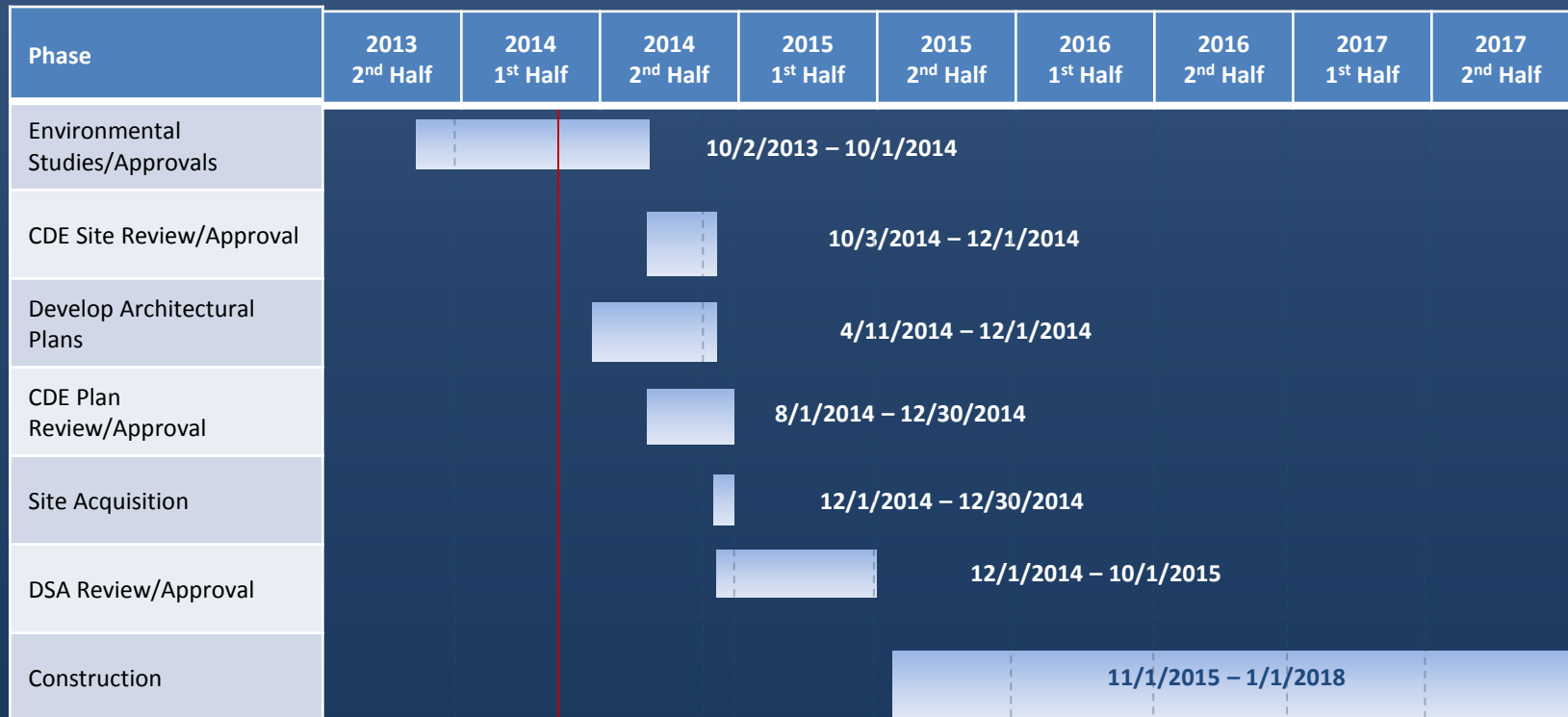
# Project & Construction Timeline

## High School #5 Site A



# Project & Construction Timeline

## High School #5 Site B



# Project & Construction Timeline

## High School #5 Site A

### Construction Schedule Options

	2014												2015												2016											
	J	F	M	A	M	J	J	A	S	O	N	D	J	F	M	A	M	J	J	A	S	O	N	D	J	F	M	A	M	J	J	A	S	O	N	D
<b>Scenario 1</b>	June 2, 2014 – August 11, 2016																																			
Site Acquisition April 30, 2014	(All facilities completed by August 11, 2016)																																			
<b>Scenario 2</b>	September 1, 2014 – August 31, 2016																																			
Site Acquisition August 15, 2014	(All facilities completed by August 31, 2016)																																			
<b>Scenario 3</b>	October 1, 2014 – September 30, 2016																																			
Site Acquisition September 15, 2014	(Performing Arts Completed by September 30, 2016)																																			
<b>Scenario 4</b>	November 1, 2014 – October 31, 2016																																			
Site Acquisition October 15, 2014	(Performing Arts, Administration & Student Union Completed by October 31, 2016)																																			

# High School Enrollment Projection Excluding Entitled Heritage Fields Units

High School Projection Per Mitigation Agreement

(Sans Creekside HS and Out of District Students) Source: IUSD14Mod 2014 Developer

Year	Existing 2013	2014	2015	2016	2017	2018	2019	2020	2021	2022	2023
Total High School Students	8,641	9,427	9,877	10,472	11,130	11,660	12,120	12,728	12,968	13,062	13,387
Potential Heritage Fields Students	(0)	(83)	(152)	(211)	(323)	(417)	(486)	(564)	(614)	(732)	(885)
Total High School Students Less Heritage Fields	8,641	9,344	9,725	10,261	10,807	11,243	11,634	12,164	12,354	12,330	12,502

- Note:
1. Projected High School Students – Excluding all Entitled Heritage Fields Development Units
  2. Threshold of 10,400 Existing and Projected 9-12 Students met in fall 2017 if Heritage Fields Developments are excluded.



Irvine Unified School District  
Orange County, California

# Questions?