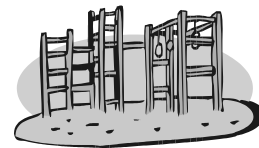


PLAYGROUND AND SUPERVISION GUIDELINES

**PLEASE READ, COMPLETE PORTION BELOW,
AND KEEP FORM IN REGISTRATION PACKET.**



We have a wonderful playground thanks to the generous financial support of our parent community. Students have the opportunity to play on the equipment **fifteen minutes before school**, during snack recess, and during lunch recess with staff supervision. For the safety of your children, please adhere to the established guidelines below:

- Parents may drop off students at school beginning at 8:00 a.m. – **NO EARLIER!** Supervision will be available on the playground until the 8:15 a.m. morning bell. Students on campus prior to 8:00 a.m. will be directed to the school office, information will be documented, and parents will be notified.
- The school grounds/playground is for the sole use of Bonita Canyon students during the school day. Only Bonita Canyon students may use the playground during this time. It is not open to preschoolers or older/younger siblings during school hours.
- All students are to go home at dismissal unless attending after school child care or after school classes. There is no supervision on the playground *after school*.
- Students may not stay to play on the equipment or to wait for an older sibling, parent, or babysitter on the playground after school.
- All students should go to the front of the school at dismissal unless a parent has designated an alternate pick up location. There is a staff member on traffic duty for 10 minutes only (after school) at the front of campus.
- THERE IS NO SUPERVISION AT CHAPARRAL PARK AT ANY TIME. IT IS NEVER SAFE TO TELL YOUR CHILD TO WAIT UNSUPERVISED AT CHAPARRAL PARK OR ANY OTHER UNSUPERVISED LOCATION!** Late pick-ups are recorded and parents will be notified.
- Once students go home and the responsibility for their safety and well-being has thus been transferred back to the parent, students may return to school to play, ***provided they have parent permission*** and provided all students, both primary and upper grades, have been dismissed (3:00 p.m. daily, 2:00 p.m. on Wed.)
- Students not picked up on time after school will be directed to the school office. Late pick-ups are documented and parents will be notified.

Thank you for your cooperation and support.

**I HAVE READ THE PLAYGROUND AND SUPERVISION GUIDELINES AND
DISCUSSED THEM WITH MY CHILD.**

Student's Name _____ Entering Grade _____

Parent Signature _____ Date _____

